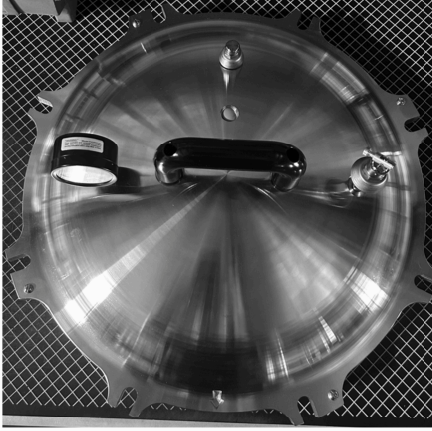
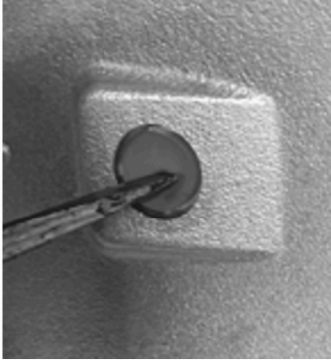
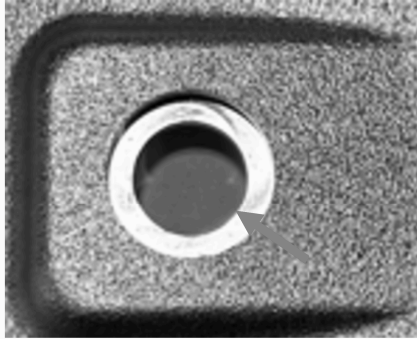

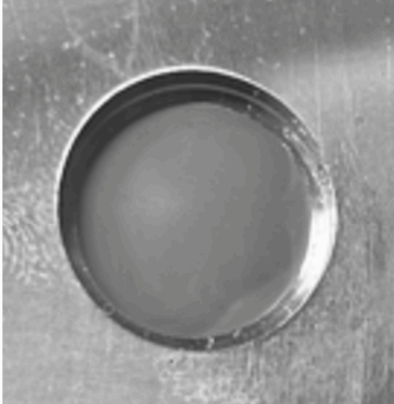


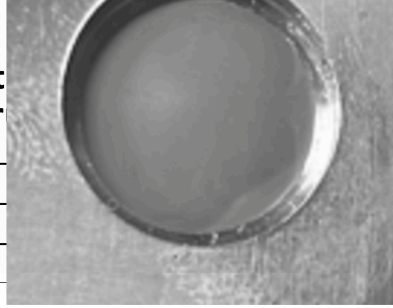
Component Replacement Instructions

Consumer Products
1931 South 14th Street
Manitowoc, WI 54220

Part Name	Overpressure Plug	Author	AD
Part Number	1010	Revision Date	02/01/2024
Instruction Details		Photos/ Images	
		<p>Tools Needed: 1. Screwdriver</p>	
<p>Removal Instructions</p> <ol style="list-style-type: none"> Use screw driver to remove by pressing through from the back. WARNING ⚠️ Careful not to damage the edges of the hole risk of not being able to maintain proper operating pressures. 		 	
<p>Installation Instructions</p> <ol style="list-style-type: none"> Install by starting on an angle from the back side then continue pressing through using your finger. 			
<ol style="list-style-type: none"> Turn cover over and confirm that it is pressed through and that there are no edges of the plug folded under. WARNING ⚠️ If not assembled correctly risk of the plug blowing out before operating pressure is achieved. 			

Component Replacement Instr

Consumer Products
1931 South 14th Street
Manitowoc, WI 54220



Part Name	Overpressure Plug	<i>AD</i>
Part Number	1010	02/01/2024
Instruction Details		